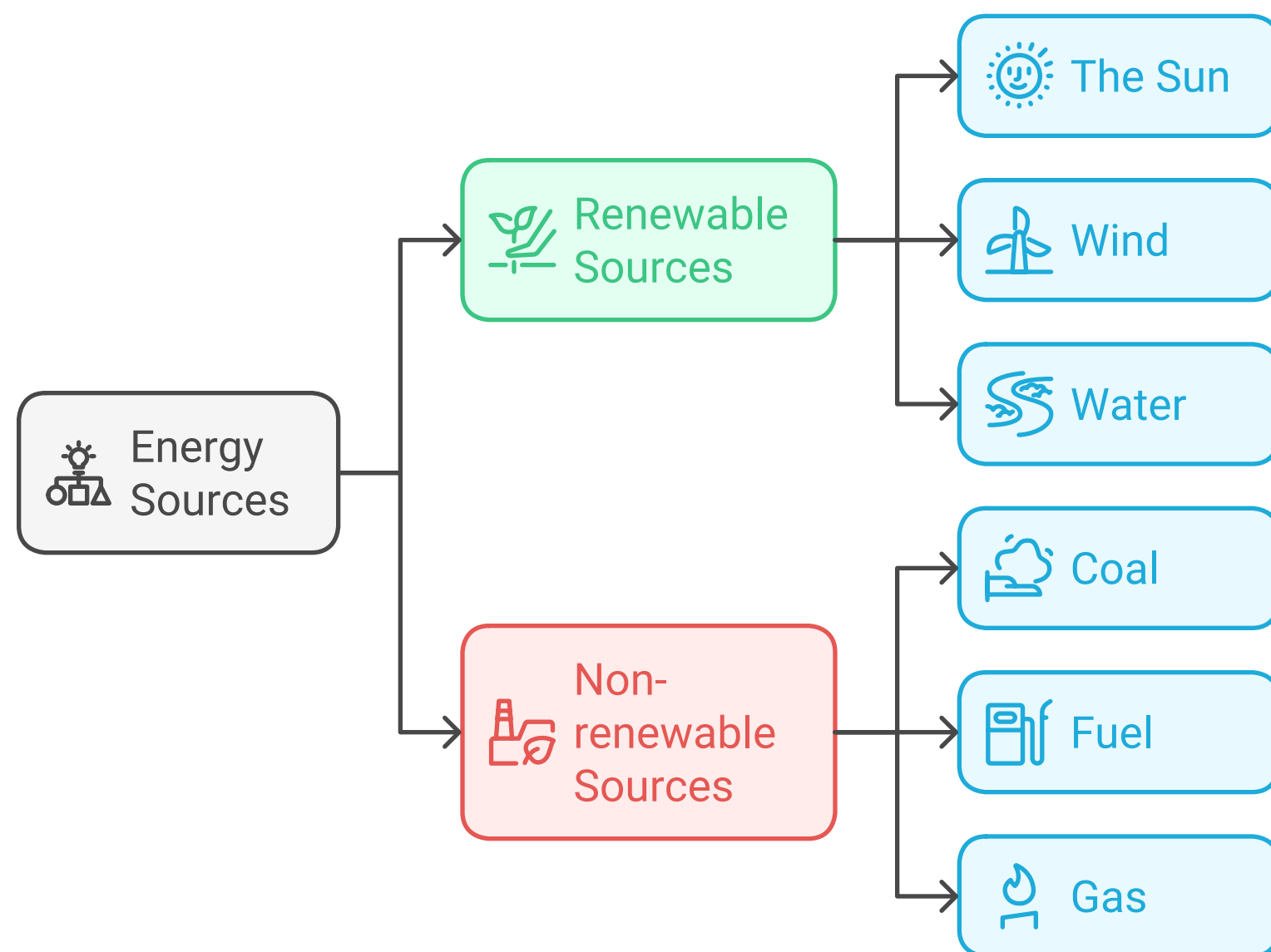


UNIT 3: A world of energy.

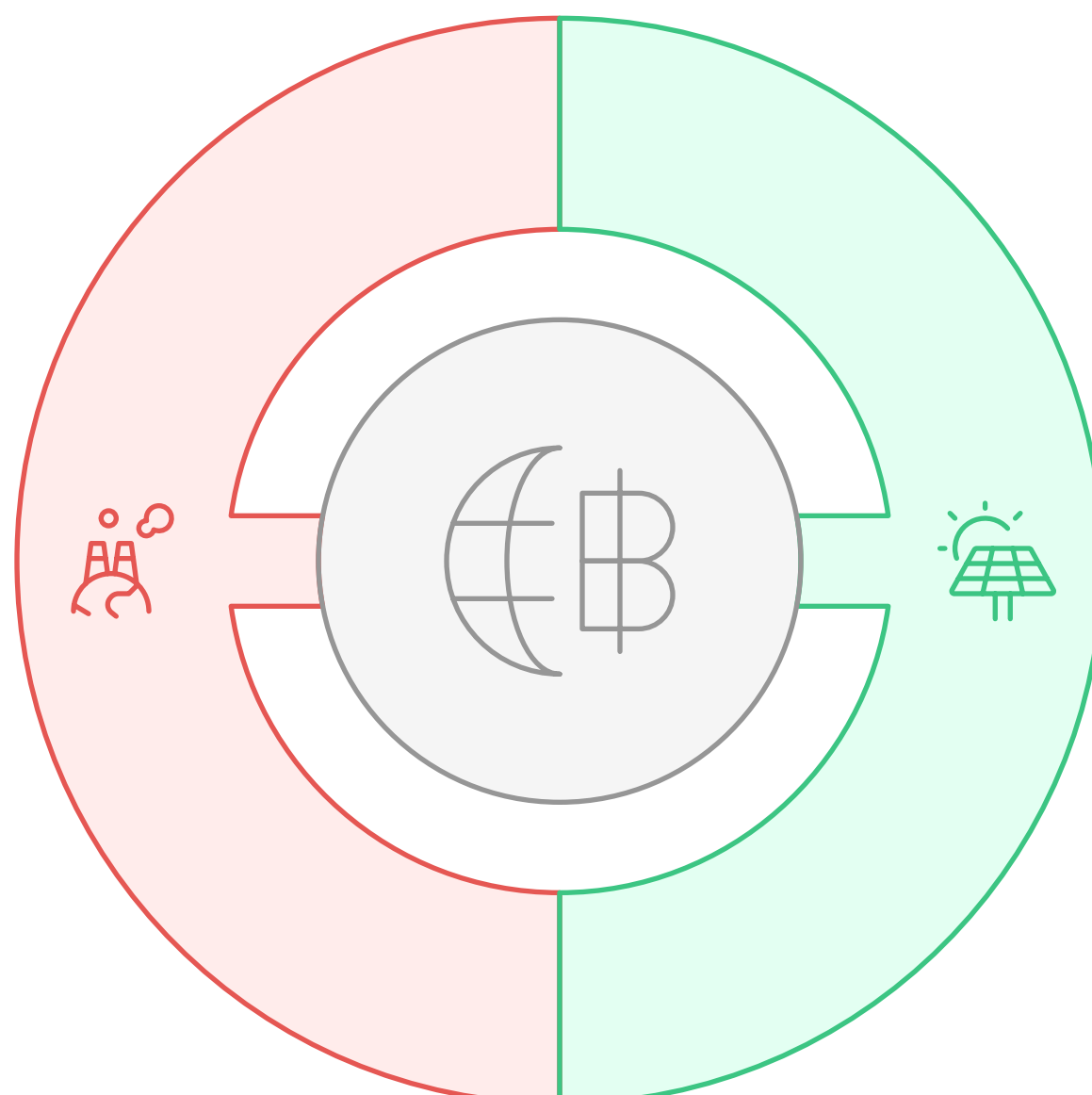
1) Energy:

Energy Sources Classification



Energy Source Characteristics

Non-renewable Energy
Sources that pollute and are finite.



Renewable Energy
Sources that are eco-friendly and sustainable.

2) Forces:

Types



Contact Forces

Involve physical touch



Non-contact Forces

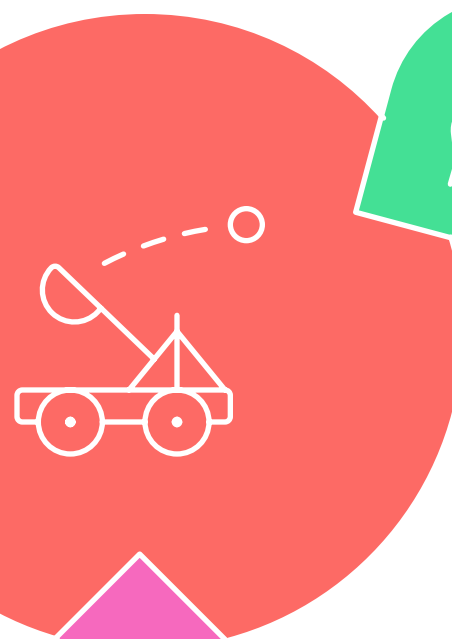
Act at a distance

Contact forces

Squeeze



Pull



Push

Non-contact forces

